



Improve your business
Improve your sustainability
Improve your family's future



Project Partner

www.bmpgrazing.com.au

What is Grazing BMP?



Industry led program focused on improving the long term profitability and sustainability of grazing business and the industry.

A WEB BASED SELF ASSESSMENT TOOL

[Home](#) [Contact Us](#)

Up-coming Events [\(see more\)](#)

-  [12 November 2015](#)
Grazing BMP information session - Winton
-  [16 November 2015](#)
Grazing BMP information session - Charters Towers
-  [17 November 2015](#)
AP, AW & PB - Esk (Grp 1)
-  [17 November 2015](#)
Grazing BMP information session - Greenvale
-  [18 November 2015](#)
AP, AW & PB - Fernvale

Grazing BMP Modules

- [Animal Health and Welfare](#)
- [Animal production](#)
- [Grazing land management](#)
- [People and business](#)
- [Soil health](#)

Grazing BMP Audit Information

- [Review the audit information documentation](#)

Grazing BMP Industry News and Reports

- [Review the latest industry](#)

What is Grazing BMP ?

The Grazing BMP program is a voluntary, industry led process which helps graziers to identify improved practices which can help improve the long term profitability of their enterprise. It also helps identify the steps you need to take to incorporate best management practices into your enterprise.

In time it will also allow the grazing industry to demonstrate good environmental management to the wider community.

[Register](#)

[Sign In](#)



1 2 3 4 5 6 7

Stop

Recent Activities

How will it help?



Individual

'Benchmark' practices against industry 'best practice' in all areas of the business.

Aggregate this data (de-identified)

Industry

Demonstrate ethical and sustainable food production to the wider community and consumers.

History



- FBA initiative
- Follows
 - Cotton myBMP
 - Grains BMP
 - Other BMP programs
- Grazing: *only* agricultural industry *without* a BMP
- Funded through Australian Government Caring For Our Country



i'm lovin' it®



OUR JOURNEY TO

VERIFIED SUSTAINABLE BEEF

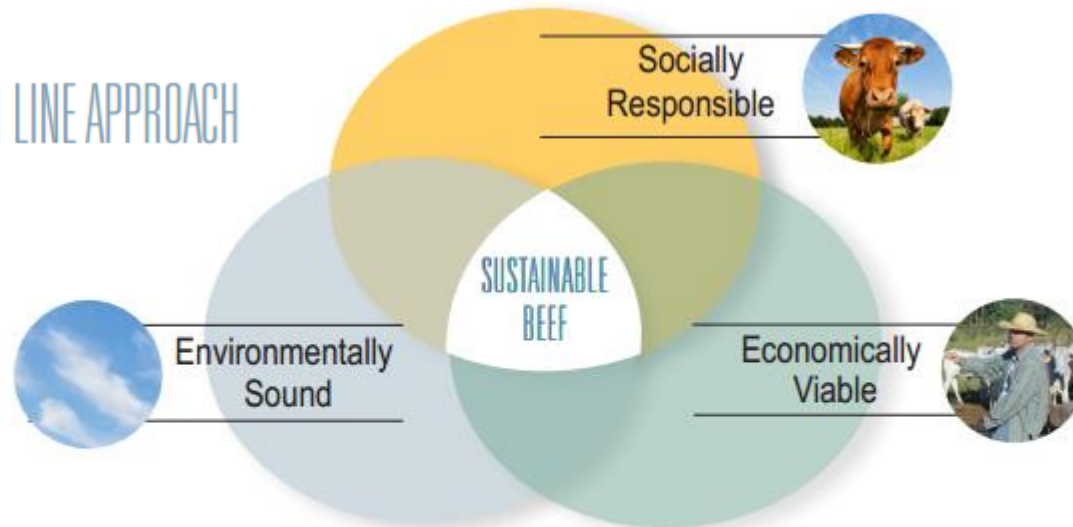
McDonald's aims to begin purchasing verified sustainable beef in 2016 - and we're on a journey to get there.





Global Roundtable for Sustainable Beef

THE TRIPLE-BOTTOM LINE APPROACH



CORE PRINCIPLES FOR SUSTAINABLE BEEF PRODUCTION AND DELIVERY

(The order of presentation does not reflect prioritization, as all are of equal importance.)

1. Natural Resources
2. People and the Community
3. Animal Health & Welfare
4. Food
5. Efficiency and Innovation

What's happening elsewhere?

GLOBALG.A.P.



Sustainable
Agriculture
Network



The Partnership



Outcomes sought

Agforce – gather data to support the industry

FBA/BMRG/EHP – process to help achieve Water quality outcomes

DAFF – improving delivery of targeted extension

The Team

- Sue Burt – Burnett Mary Regional Group
- Roger Sneath – DAF
- Megan Gurnett – DAF
- Michael Taylor - AGFORCE



5 Modules – 157 Standards

- Soil Health (13 standards)
- Grazing Land Management (31 standards)
- Animal Health and Welfare (37 standards)
- Animal Production (35 standards)
- People and Business (41 standards)



Demonstrate
commitment to
environmental
best practice

Access to
funding

Identify areas
for
improvement

Support for
finance
application

Support
the
industry

Access to
information

See what's
new

Market
access

Support self
regulation rather
than more
legislation

Delivery Format

- 5 modules over 3 workshops
 - 1 month between workshops
- 2 consecutive day accelerated workshop
- 5 modules in 1 day
- One on One assistance



3 Phases of the GBMP Program

- **Phase 1**
 - Self assessment of 5 modules
- **Phase 2**
 - Become an accredited Grazing BMP Producer
- **Phase 3**
 - Accreditation current for 3 years – audit verification

Become an Accredited Grazing BMP Producer

Benefits

- It's free
- Financial incentives from AgForce
- Verified evidence for the Grazing Industry
- **It gives you negotiation power**

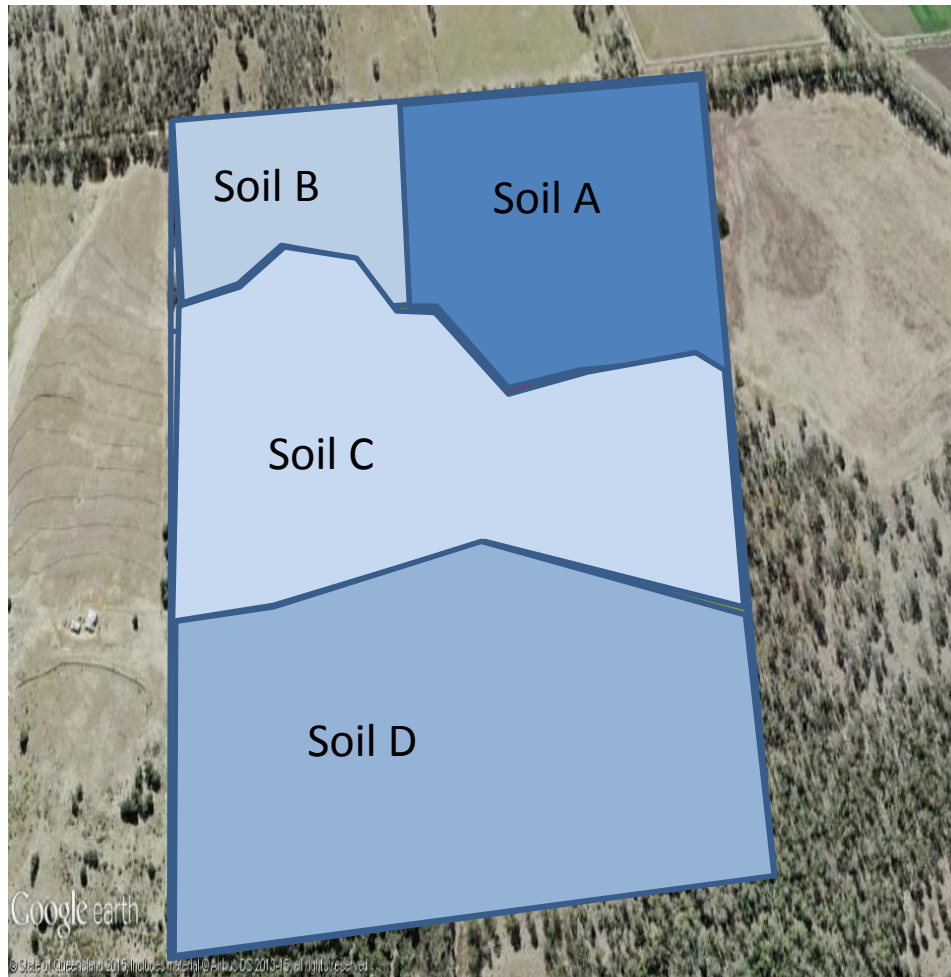
What's Involved

- Complete all 5 modules of the Grazing BMP program
- Self assess to be at industry standard
- Contact one of the Grazing BMP team
- Have your self assessment verified by an independent 3rd party auditor.
- Certification is current for 3 years

What will the auditor want to see?

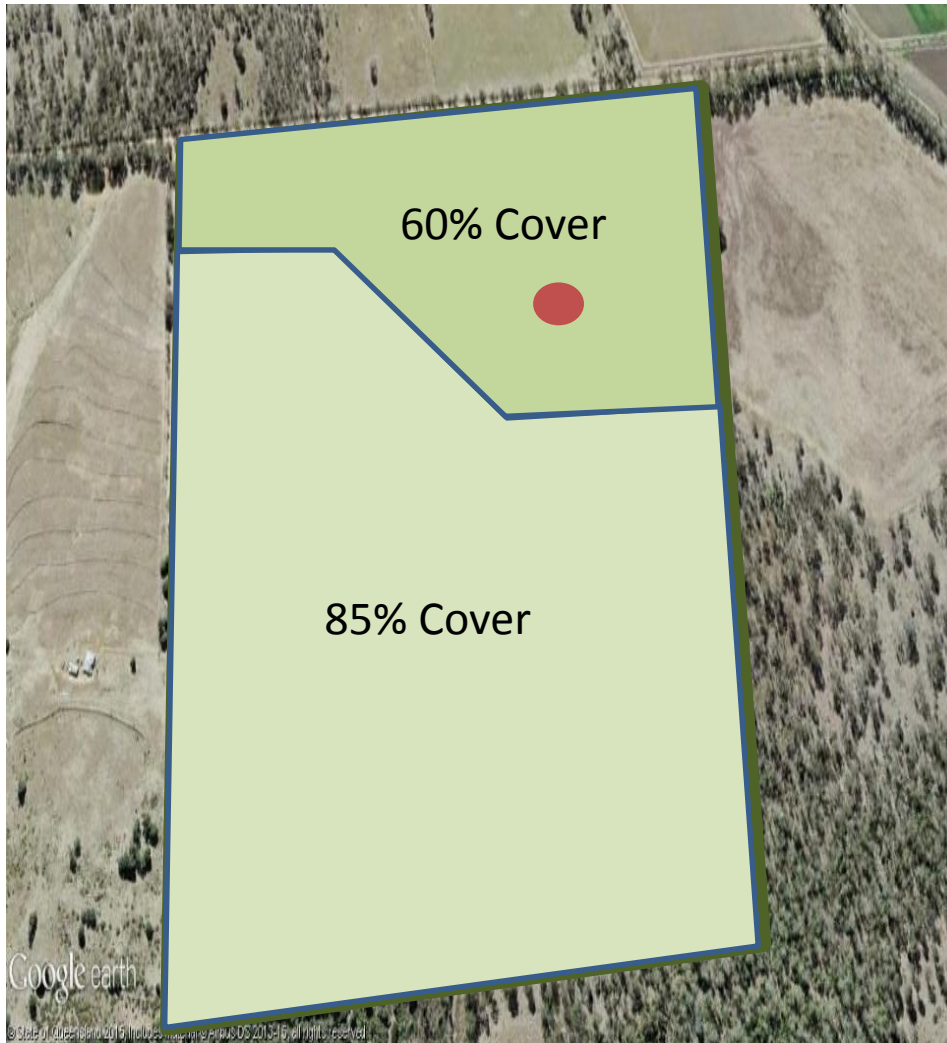
- We can give you a copy of:
 - The audit template that the auditor will be checking off
 - A list of evidence the auditor would like to see

Property Mapping



- Paddocks
- Roads
- Water points
- Land types
- Soil types
- Monitoring sites
- Any areas of erosion or scalding

Property Mapping continued



- Any high risk erosion areas
- Rivers, major creeks and wetlands
- Fire breaks
- Vegetation cover status
- Grazing pressure circles
- Airstrips
- Fencing
- Weeds
- Evacuation/emergency planning

Stock and Pasture Management

- Written records of paddock stocking rates and management
 - Property rainfall records
 - Site or manager's diary
 - Property inspection of on ground implementation
 - Stocktake or other pasture management information
 - Receipts, payment for project management related services. Consultants or service providers
 - Grazing Calendar
 - Permits, licenses or applications

Property Planning

- Property plans and/or recorded history of stocking rates
- Relevant training or workshop attendance, historical property aerial images
- Plans or actions that highlight management options to maintain high levels of groundcover

Business Records and Property Development

- Property Management Plan
- Business Plan
- Financial Records
- Receipts, payment for project management related services.

Fire Planning and Management

- Fire planning, staff training and management records
- Fire plant and associated maintenance records or similar
- Fire plan
- Paddock burning records
- Fire trails maintained mapped and recorded
- Readily available contact details of warden and neighbours
- Receipt payment for fire management related services or permits
- Fire extinguishers and associated tools and resources

Chemical Records and Storage

- Chemical usage records
- Chemical storage and handling procedures, emergency procedures
- Disposal considerations
- Accessible and current Safety Data Sheet and appropriate first aid if possible
- Training completion or attendance documents

Workplace Health and Safety

- WH&S staff and contractors induction procedures
- Training completion or attendance
- Identification and management of safety risks as appropriate
- Receipts for workplace safety management related services

Animal Welfare

- Property diary, muster/yard records, paddock book. NLIS records, LPA records
- Records of drug/vaccine use, veterinary consultation records.
- Plans for managing disease, floods and droughts impact
- Training records or demonstration for workers
- Planning and handling evidence demonstrating welfare standards are considered and integrated.
- Records relating to water/feed supply

CONTACTS

SUE BERT (BMRG) – 0499 545 627

MICK TAYLOR (AGFORCE) – 0428 986 071

ROGER SNEATH (DAF) – 0429 721 926