

AgForce Projects



BIOSECURITY FIELD DAY

Roma – TUESDAY 1 JULY 2014

The project is delivered by AgForce Projects with the support of the Queensland Government, the Australian Petroleum Production and Exploration Association and the GasFields Commission Queensland.

Topics to be covered

- CSG activities in QLD
- Biosecurity framework for resource companies
- Landholder considerations in Conduct and Compensation Agreement (CCA) negotiations
- Issues and complaints
- Review and ongoing requirements

Note: these sessions provide an overview of information and should not be used in lieu of legal and other professional advice.

Risks to property biosecurity

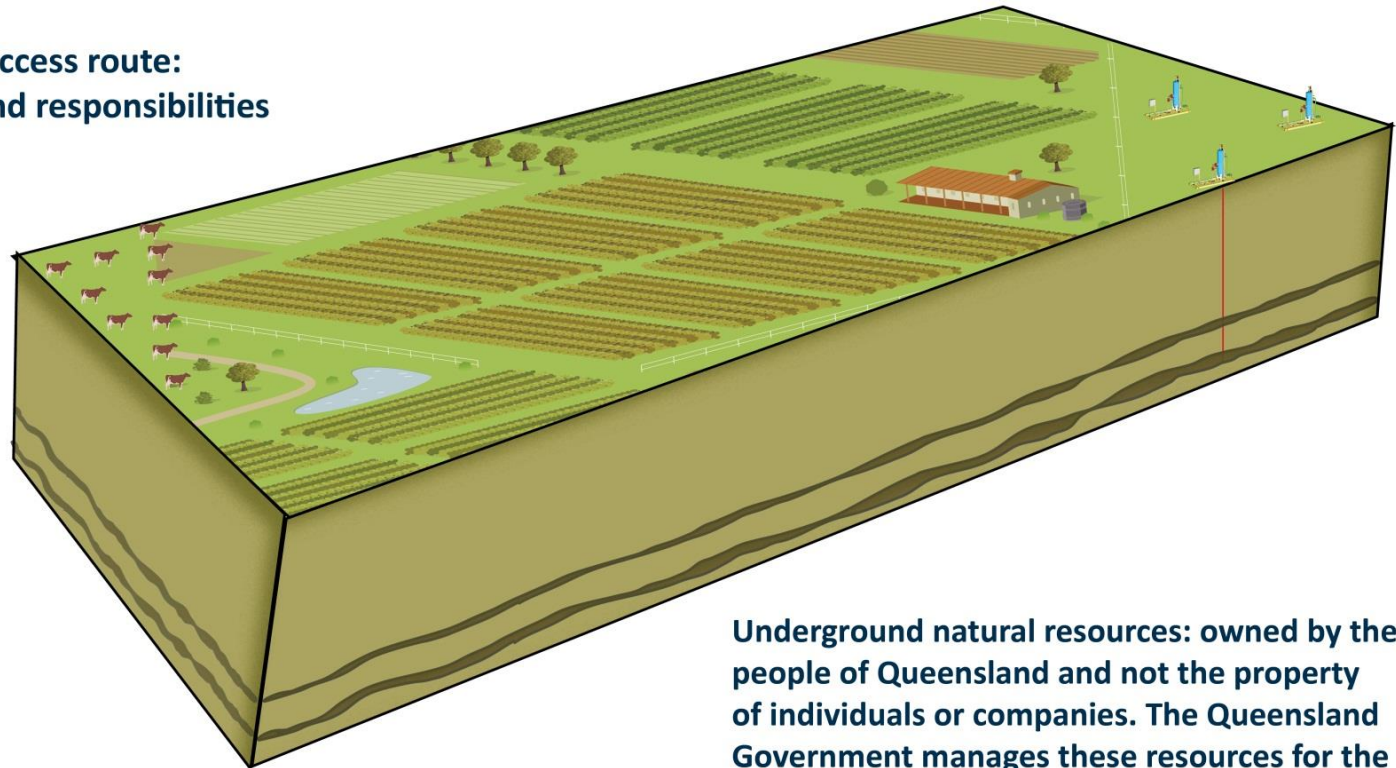
CSG is one industry among many now operating across the same landscape

Consider:

- Power companies
- Main roads
- Local roads
- Coal or mineral exploration
- Prospecting or fossicking
- Stock inspectors and stock routes
- Any other entry of external vehicles or equipment

Land access and resource companies

**You own the access route:
know your rights and responsibilities**



Underground natural resources: owned by the people of Queensland and not the property of individuals or companies. The Queensland Government manages these resources for the benefit of all Queenslanders.

- » A resource company cannot unreasonably interfere with your lawful activity
- » It is an offence to obstruct a resource company from conducting its authorised activities

CSG development in Qld

7510

Approx. CSG wells in Qld
(including production/
development, appraisal &
exploration wells)

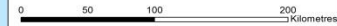
20,000 - 40,000

Estimate of total number
of wells drilled over life
of the industry

	2011	2012	2013	2014
Production wells (development)	1936	2567	3833	4641
Appraisal wells	1081	1342	1589	1675
Exploration wells	949	1102	1182	1194
Total	3966	5211	6604	7510

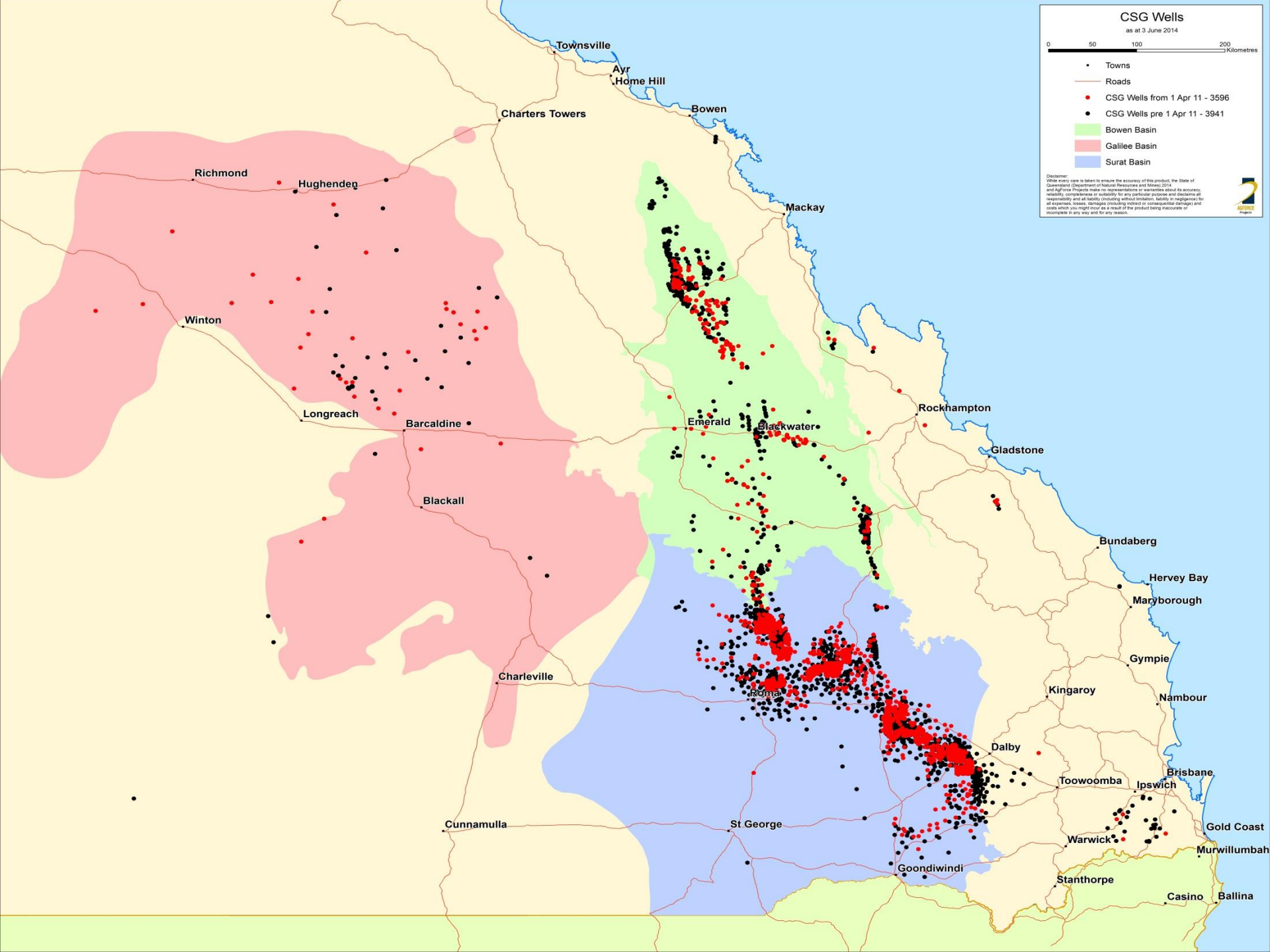
CSG Wells

as at 3 June 2014



- Towns
- Roads
- CSG Wells from 1 Apr 11 - 3596
- CSG Wells pre 1 Apr 11 - 3941
- Bowen Basin
- Galilee Basin
- Surat Basin

Disclaimer:
While every care is taken to ensure the accuracy of this product, the State of Queensland (Department of Natural Resources and Mines) 2014 and Affiliates Projects make no representation or warranties about its accuracy, reliability, completeness or suitability for any particular purpose and disclaims all responsibility and all liability (including without limitation, liability in negligence for all expenses, losses, damages (including indirect or consequential damages) and costs which you might incur as a result of the product being inaccurate or incomplete in any way and for any reason.



Land access

- Before a company can undertake advanced activities on a property (e.g. drilling, intensive seismic activities) they must negotiate an access agreement (known as a Conduct and Compensation Agreement) with the landholder
- There are minimum time frames in place for this process
- CCA's cover COMPENSATION for activities and impacts and **CONDUCT** regarding how activities will be carried out and property specific considerations (including property specific biosecurity provisions)

Conduct and compensation agreements (CCA)

CCA's have two distinct components

Conduct

Compensation



Key points:

- Your CCA is **attached to your land** for the term of the agreement
- Negotiate a timeframe and/or **review period** for CCA
- **Necessary and reasonable** legal, accounting and valuation **costs** you incur to negotiate or prepare a CCA are **reimbursed**
- Consider **additional provisions** specific to your property and your lifestyle

Resource company obligations

Land access code (2010) sets down mandatory provisions for weed and pests that all resource companies* must comply with including:

- When the risk of spreading pests is likely to be reduced by washing down, then the company must ensure all employees and contractors wash down vehicles and machinery before entering a property
- Also maintain a record of all wash-downs and if asked present these

Further:

- Companies must take all reasonable steps to ensure that, in carrying out authorised activities, employees and contractors do not spread the reproductive material of a **declared** pest
- Also take all reasonable steps to ensure that when entering or leaving lands under a resource authority, that employees and contractors do not spread the reproductive material of a declared pest

**CSG companies must comply with LAC conditions at all stages. Coal companies only at exploration*

Land Access Code (LAC) obligations- Declared Pest

A declared pest under the LAC means:

- A declared pest under the Land Protection (Pest and Stock Route Management) Act 2002, schedule 3; or
- An animal or plant declared under a local law to be a pest because the animal or plant is causing, or has the potential to cause, an adverse environmental, economic or social impact in all or part of the local government area.

Petroleum industry standards

PETROLEUM INDUSTRY

(INCLUDING COAL SEAM METHANE GAS)

- Sets down industry best practice standards for pest and weed management
- Talk with your company rep about their own guidelines and ensure are clear and meet your requirements

MINIMISING PEST SPREAD

ADVISORY GUIDELINES

https://www.daff.qld.gov.au/_data/assets/pdf_file/0016/61144/IPA-Minimising-Pest-Spread-Advisory-Guidelines.pdf

Biosecurity CCA considerations

Points to consider during negotiations with a resource company

- Have you considered or negotiated conducting a weed baseline assessment prior to access to property being granted? Consider the time of this inspection in relation to seasonal conditions and growth periods
- Where are the high risk weed areas on property and are these mapped by you or the company?
- Do you have an existing property weed management plan?
- Does your CCA establish who is responsible if there is an outbreak as a result of the company disturbing the weed seed bank through their activities?
- Have you negotiated or discussed the rehabilitation process? Do you sign off on this and when does this happen, progressive vs end of lease?
- How long after the company leaves are they responsible - considering growth times?
- Does the vehicle wash-down certificate have:
 - Km reading
 - Date washed down
 - Who inspected and what was included
 - Area vehicle has travelled

Biosecurity CCA considerations

Points to consider during negotiations with a resource company continued

- List the high risk weeds, pests and diseases to prevent entry and/or spread on the property
- Consider impact of declared and non-declared biosecurity risks on property business
- Know where to get information and distribution maps for regionally important pests, weeds and diseases
- Can company staff or contractors identify high risk weeds, pests and diseases
- Traceability for biosecurity risks (e.g. a visitor register for staff and vehicles, if feasible)
- Monitor disturbance areas and tracks for pest and weed outbreaks. Manage outbreaks before weed seeds are mature
- Managing biosecurity outbreaks: By who? When? What method and timing?
- Any pesticide withholding periods and WHS requirements?

Clarify proposed activities

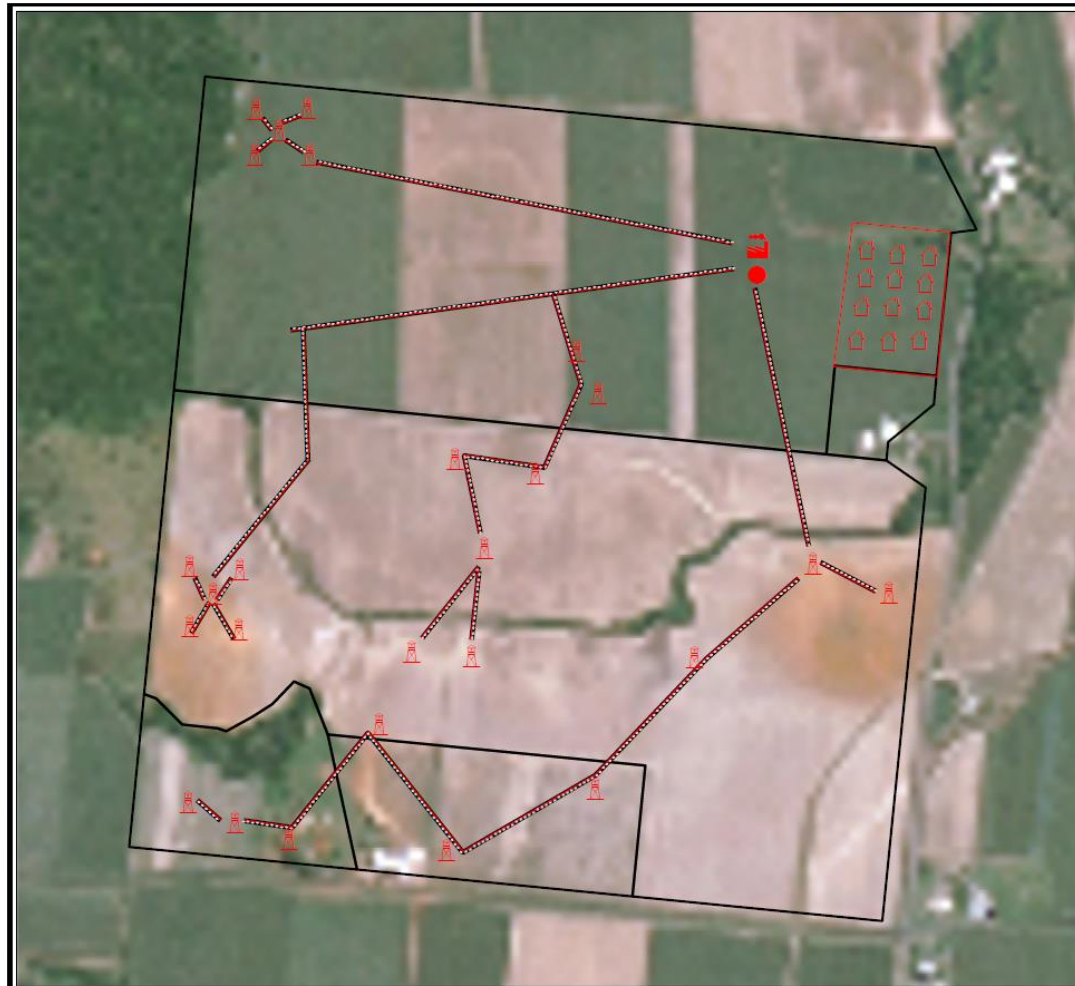
1. List and detail proposed activities

i.e. 5 wells

10 km access roads

2 x holding ponds

2. How can you identify the impact of these activities on your property and what are biosecurity risks?



BLOCKODIRT
Lot 1 Plan RP1234

LEGEND

- Boundaries
- Mining camp
- Compressor station
- Operations pad
- CSG wells
- Aggregation dam
- Service road

EXAMPLE MAP ONLY

Satellite Image
Image Type: SPOTS
Image Date: 2006 & 1 Jul 2009
© CHES 2005, Distribution: SPOT Imaging Services, all rights reserved

Projection: _____ Map Grid of Australia (MGA), Zone 55
Horizontal Datum: _____ Geocentric Datum of Australia 1994 (GDA94)
Black numbers and grid lines on the map are 2000 metre intervals.
The grid on this map is in Zone 55.

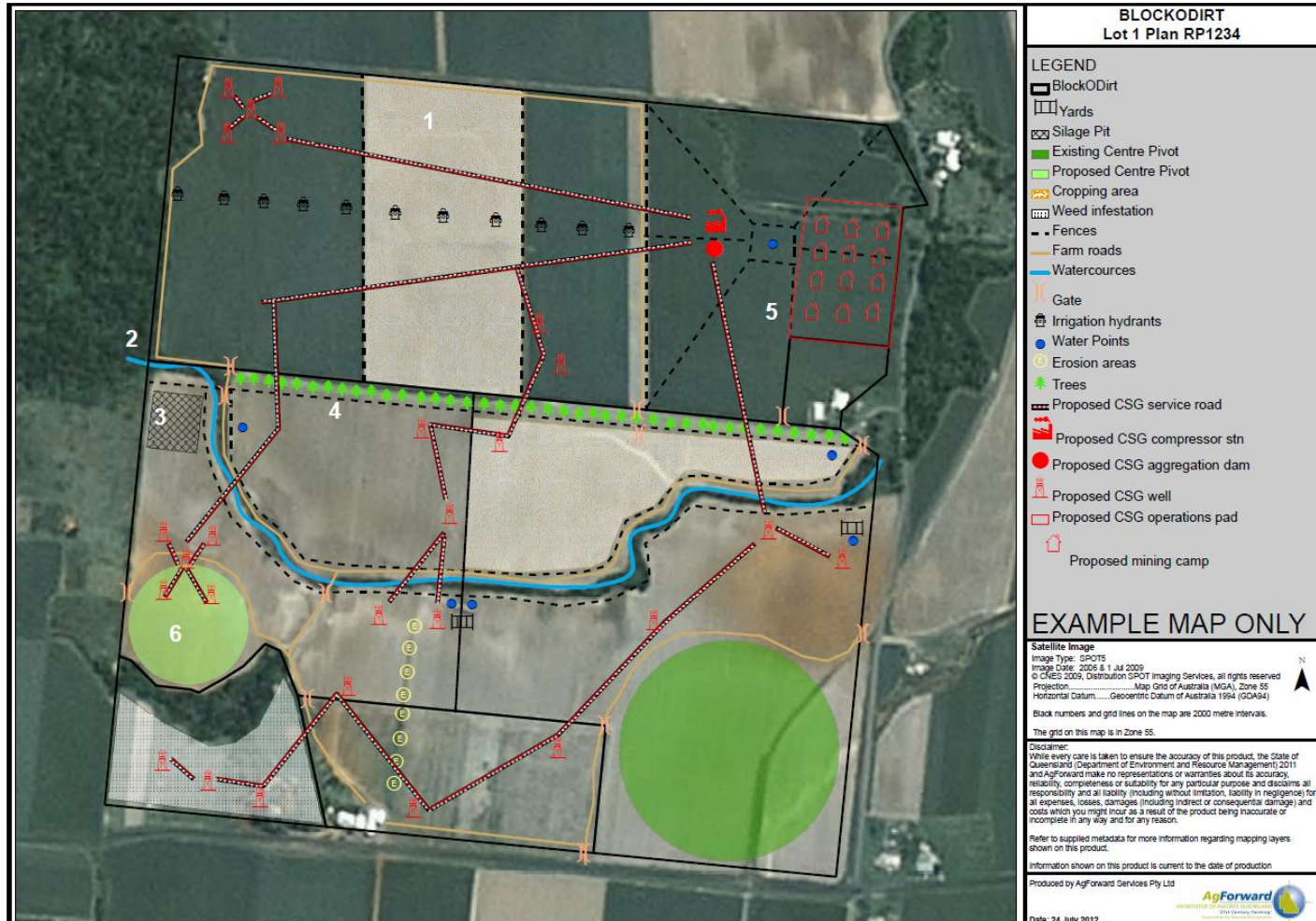
Disclaimer:
While every care is taken to ensure the accuracy of this product, the State of Queensland (Department of Environment and Resource Management) 2011 and AgForward make no representations or warranties about its accuracy, reliability, completeness or suitability for any particular purpose and disclaims all responsibility and all liability (including without limitation, liability in negligence) for all expenses, losses, damages (including indirect or consequential damage) and costs which you might incur as a result of the product being inaccurate or incomplete in any way and for any reason.

Refer to supplied metadata for more information regarding mapping layers shown on this product.
Information shown on this product is current to the date of production
Produced by AgForward Services Pty Ltd

AgForward
Sustainable Energy Solutions
Date: 24 July 2012

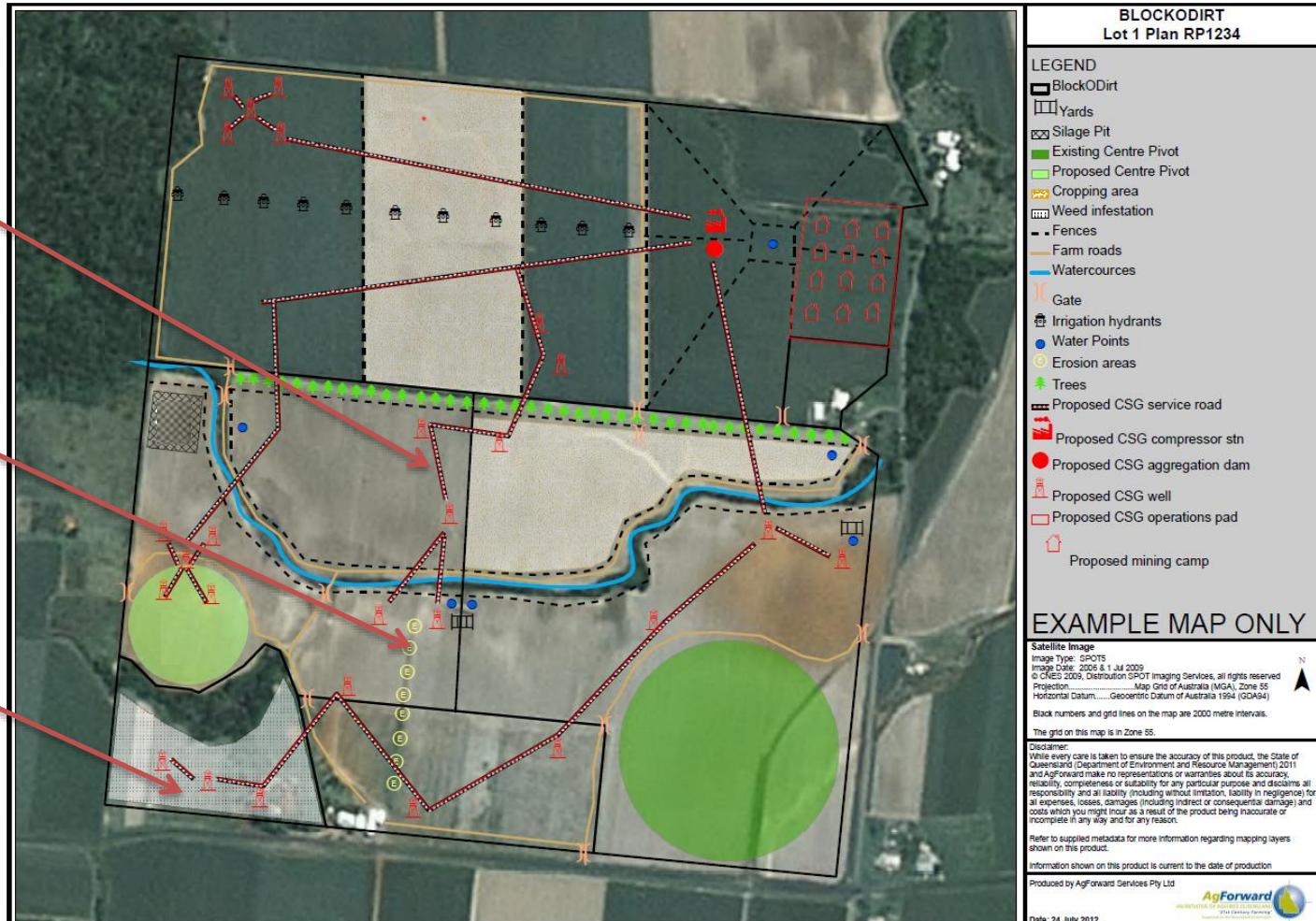
Identify risks through property plans

Once you overlay proposed CSG infrastructure the potential impacts become much clearer:



Identify risks through property plans

- Locate proposed development areas and access roads—conduct baselines
- Highlight weed risk areas (wash down areas, neighbouring access roads, flood plain areas etc.)
- Identify any known weed areas on property



Reviewing signed CCAs

- If there is a material change in circumstances, a CCA must be updated to reflect activities and impact
- Understand the term of the CCA: specific time or is it for life of tenure?
- What activities does the CCA cover?
- If signed years ago - does it reflect current practices or could you and company improve on it?
- Consider discussing with company representative to review effectiveness of:
 - Any updated weed strategies
 - Site remediation/rehab
 - Access times and arrangements
 - Any ongoing activities
- If renegotiating or developing a new CCA what would you do differently?

Issues and complaints

- Contact your company representative first
- If no progress, contact the **CSG Compliance Unit: (07) 4529 1500**
csg.enquiries@dnrm.qld.gov.au
- Baseline data:
 - Photos of weed burden pre resource development
 - Log book of vehicle register and wash-down certificates
 - Dates of identified weed outbreak
 - Control measures to date
- LBN has detailed property plan checklists and record templates
- AgForce Projects delivers a free training program for a computer mapping program including how to record GPS photos and baseline records on a map

Monitor and review

- **Review impacts**
- **Utilise professional advice**
- **Stay informed**